

Having trouble viewing this email? [Click here](#)



San Francisco Orchid Society Newsletter

In This Issue

[January Speaker - Ron Kaufmann.](#)

[Life on the Rocks - the World of Rupicolous Orchids](#)

[New Membership Directory](#)

[SFOS Board Minutes](#)

[AOS Awards](#)

[SFOS Bulletin Board](#)

[Announcements](#)

Quick Links

[San Francisco Orchid Society](#)

[Web Site](#)

[Membership/Change of Address](#)

[Newsletter Submissions](#)

[Upcoming Events](#)

[Notices](#)

[Member's Corner](#)

[Past Newsletters](#)

Membership

[Join the SF Orchid Society](#)

[Contact the Membership Chairman](#)

[Welcome New Members](#)

[SFOS Meeting](#)

January 2013 Volume 62 Number 1

The mission of the SFOS is to foster the culture and cultivation of orchids and to promote education of its members and the public about orchids. Our goals include: an exchange of information from exhibitions, publications, and the Internet, maintenance of a reference library, and participation in worldwide activities.

January Speaker

[Ron Kaufmann](#)

Life on the Rocks -
the World of Rupicolous Orchids

[Ron Kaufmann](#)

Tues. January 8, 2013



SF Orchid Society

Tues. January 8, 2013
AOS Judging: 7:00 PM
Skills Session: 7:05 PM
Meeting: 7:30 PM

San Francisco County Fair
Building, Golden Gate Park, 9th
Avenue and Lincoln Way, San
Francisco. Plants submitted for
American Orchid Society
Judging must be entered
between 6:30 pm and 7:00
pm.

Speaker

Ron Kaufmann

*Life on the Rocks -
the World of
Rupicolous Orchids*

Skill Session

Ron Kaufmann
*Conservation of orchids and
orchid habitat*

Plant
Opportunity Table



The speaker in January will be Ron Kaufmann, Chair of the San Diego County Orchid Society Conservation Committee and a Founding Director of the Orchid Conservation Alliance. Ron has traveled extensively to view orchids in the wild in South America. His talk titled "*Life on the Rocks: the World of Rupicolous Orchids*" will explore the habits and habitats of orchids that grow on rocks.

Ron is a Marine Biologist by training, and his scientific work includes studies of Antarctic and deep-sea ecosystems as well as marine communities in coastal Southern California. He has been growing orchids for nearly 20 years, starting with a reedstem *Epidendrum* and progressing to a diverse collection that contains mostly species orchids.

Ron has a long-standing interest in conservation and has been a member of the SDCOS Conservation Committee for almost 15 years and chair since 2004. Since 1991, the Conservation Committee has awarded over \$165,000 to support projects in 21 different countries. Ron also helped to found the Orchid Conservation Alliance and serves on the boards of the OCA, EcoMinga Foundation (a conservation foundation based in Ecuador) and Orchid Digest.

Life on the Rocks -
the World of Rupicolous Orchids

Mary Nisbet
California Orchids

2011-2012 SFOS
Officers/Contacts

President

Mary E. Gerritsen
meg570@comcast.net

Vice President

Steven Beckendorf
beckendo@berkeley.edu

Secretary

Valerie Mountain
415-664-5065
valeriemountain@yahoo.com

Treasurer

Jeff Harris
jharrisofs@gmail.com
415-586-9940

Show Treasurer

Dan Peter
650-563-9259
dan.peter@sbcglobal.net

Directors

Eric Wells
415-656-4346
ejwells@sonic.net

Allison Lehman
510-912-5800

allison@webbnet.com

Ricki Kohn
415-384-0427

ricki@rkmediasolutions.com

Chris Mende
chrismendefoto@aim.com

Jean Lee

Past President

Dennis Westler
Show Chair

Membership Co-Chairs

Florence Inserto
floinsert@yahoo.com

Claire Zvanski
czvanski@hotmail.com
(415) 341-3085

Newsletter Editor

Stanford Stapleton
415-384-0746

stanford@rkmediasolutions.co



Most orchid growers are familiar with epiphytes (plants that grow on other plants) and terrestrials (plants that grow in the ground), but there are many species that grow on rocks and are known as rupicolous plants or lithophytes (literally "rock plants"). Ron's talk will describe locations and conditions where rupicolous orchids occur in the wild and offer some suggestions for how to grow them in cultivation using knowledge about the conditions they experience in nature.

Ron grows most of his orchids in a 36 x 24 foot greenhouse and several outdoor shade-covered areas around his house in San Diego. Friends have suggested that he build a second, much larger greenhouse to accommodate the many plants that often make walking through his greenhouse an exercise requiring extensive training in gymnastics and yoga to avoid serious injury. Thus far, this recommendation hasn't been followed although the temptation is always there.

Skill Session Details

Conservation of orchids and orchid habitat is an issue that concerns many growers and societies. Since 1996, the San Diego County Orchid Society Conservation Committee has been raising funds by selling donated plants and using the proceeds to support conservation projects. They have also developed a procedure for soliciting and evaluating applications for projects that match their goals. Ron will provide a bit of history about the SDCOS Conservation Committee, talk about how it raises and distributes funds and discuss the lessons that have been learned in trying to support

[m](#)

AOS Representative

Carol Zoltowski
415-657-3222

czoltowski@sbcglobal.net

Orchid Digest
Representative

Jean Lee
415-665-6079

jeanleeorchids@gmail.com

Plant Sales

Masaki Asuka
650-588-6753

Property Managers

Ellen Edelson
415-731-5924
Maureen Clarke
415-333-4033

maureenclarke@sbcglobal.net

Raffle Tickets

Ellen Edelson
415-731-5924
Maureen Clarke
415-333-4033

Librarian

Chris Mende
chrismendefoto@aim.com

Show Chair

Dennis Westler
415-336-2752

DennisWestler@aol.com

POE Sponsorship

Frances Larose
650.548.6700

flarose@prmagic.com

Webmaster

Contact: Dennis Westler
DennisWestler@aol.com

Web Site

www.orchidsanfrancisco.org

info@orchidsanfrancisco.org

A California Non Profit 501(c)3
Corporation

SFOS NEWSLETTER January
2013

[back to top](#)

orchid conservation as a society.

Since the San Francisco Orchid Society has recently formed a Conservation Committee, we hope to use the very successful San Diego Conservation Committee as a model for our activities. We encourage everyone who is interested in orchid conservation to attend this special skill session.

Dinner with the Speaker

Please join us in the parking lot in back of the SF County Fair Building at 5:30 PM sharp.

2012 Membership Directory

The new membership directory is now online on the SFOS website. All members with an email address in our records should have received instructions for login and password.

If there are errors, please contact Florence Inserto - flojoinsert@yahoo.com or Claire Zvanski: (415) 341-3085 - czvanski@hotmail.com.

2013 Dues Are Now Payable

(\$25 per year)

Dues may be payable at any SFOS meeting, or go the Web site www.orchidsanfrancisco.org

and use *Pay Pal* or mail to

SFOS- Membership

PO Box 27145

SF, CA 94127-0145

- \$25/year (with Email Newsletter Option)
- \$45/year (with USPS Mail Newsletter Option)

Thank you!

Welcome New Members

Ashley Scott
Sylvia Darr

Please welcome our new members whenever you meet them and especially at the San Francisco Orchid Society meetings.

Refreshments

N-S

SFOS members are encouraged to help out with refreshments, setup and cleanup at Monthly Meetings. If your last name falls within the letter range N - S please bring snacks such as fresh fruit, ice cream, crackers & cheese for the next meeting. About three dozen cookies, one cake, one to two pounds of fruit or cheeses, or one box of crackers is an appropriate amount. Remember to pick up your raffle ticket as one of the rewards of sharing - and good luck in the

dra
win
g!



Minutes of SFOS Board Meeting

Minutes of SFOS Board Meeting, December 10, 2012

Virtually Present: Mary Gerritsen, Jean Lee, Dennis Westler, Valerie Mountain, Ricki Kohn, Eric Wells, Allison Lehman, Claire Zvanski

Absent: Steve Beckendorf, Jeff Harris, Chris Mende, Florence Inserto

I. Vice President's Report

A. In Steve's absence Mary noted that Ron Kaufmann will be the speaker for the January meeting, topic: Rupicolous Orchids. He will also lead the skill session, speaking about the San Diego Orchid Society Conservation Committee.

II. Membership Report

Claire reported that she & Florence are working hard to get the membership information organized. She would like to use a Netbook to enter information at the monthly meetings.

III. Treasurer's Report

(Sent in by Jeff) Current balance is approximately \$148,000, noting that the account level has remained fairly stable despite much activity due to the POE Vendor payments coming in at a rate that is offsetting the spending for POE preparations, which are our biggest monthly expenses.

IV. Old Business

Dennis: POE report. We are still waiting for a written confirmation from the Taiwan sponsors, but do have one from KCBS. This has affected the funds available for street advertising for the show. The list and schedule of seminar speakers has been finalized by Mary. It is on the POE Facebook page and has already had over 800 views. Tee shirts and wine glasses have been ordered, with more wine glasses to be available this year. Ticket

sales are up and running. The artwork for the trophies is done, and they have been ordered. Most of the vendors have paid or committed, and exhibitors are also signing up. There is a wide selection of vendors this year, with many new ones both domestic and international. The Hospitality Chair position is still open. Lynn Murrell will chair the Silent Auction and donations are coming in. There will also be a Live Auction, with the same auctioneer as last year.

IV. New Business

Library: Mary & Allison will update the book inventory to see what needs to be replenished. Jeff would like to add a copy of each of the books recently ordered to the library inventory. There was discussion of how to make the library work better, perhaps having someone sitting at a table near the books, and reminding the members of what books are available.

A. The sound system is still out for repairs. It should be back in time for the January meeting.

The meeting was adjourned at 8:25.

Respectfully Submitted,

Valerie Mountain

[backto top](#)

AOS Awards

AOS Awards

American Orchid Society Pacific Judging Center Web site: www.aospacificcentral.org/
Please check the Web site for the most recent awards.

[back to top](#)

SFOS Bulletin Board

The Bulletin Board is a free service for SFOS members' orchid related items. Send items by the 15th of the month by email to: stanford@rkmediasolutions.com Include your name, phone number, and how long you want the item to run. We will also run items of interest from other orchid societies. All submissions will be reviewed and may be edited.

Upcoming Events

January 8, 2013 7:30pm - SFOS General Meeting

Ron Kaufmann - Main Speaker

Subject: Life on the Rocks: the World of Rupicolous Orchids

Skill Session - Ron Kaufmann

Conservation of Orchids and Orchid Habitat

January 18, 2013 - Friday Cymbidium Orchid Auction - Gold Coast Cymbidium Growers

Auction: 7:00 PM Reg. & Preview: 6:30 - 7:00 PM. San Mateo Garden Center 605 Parkside Way, San Mateo, CA 94403 www.goldcoastcymbidiumgrowers.com ; bacyma@yahoo.com (510) 582-5896

January 25, 2013 - Peninsula Orchid Society show plant entry and judging - AOS and CSA judging, ribbon judging, Perpetual Trophies awarded.

January 26 & 27, 2013 - Peninsula Orchid Society Show and Sale - Community Activities Building, 1400 Roosevelt Ave, Redwood City - 10 AM to 5 PM both days - orchid show, presentations and demonstrations, member sales area, and vendor sales area. Adult admission only \$5. Seniors, disabled, and children 12-16 admitted for \$3. Parking is free.

www.penorchidsoc.org

February 21 - 24, 2013 San Francisco Pacific Orchid Exposition "East Meets West"

Ft. Mason - San Francisco, CA <http://www.orchidsanfrancisco.org/poe.html>

Upcoming Speakers

TBA

Notices

Wear Your Name Badge

The board voted to provide a special raffle ticket to members when they pick up and wear their name tags at our meetings. A drawing for a plant from the opportunity table will be limited to this and will immediately follow the choice by the person who did the Skill Session and the winner from the Show and Tell table. So, wearing your name tag will get you an early selection from the opportunity table.

Your name tag will be available at the membership table.

SF POE 2013 Tickets are available for sale on the SFOS Website.

Looking for gift suggestions? Why not give your friends, neighbors and loved ones tickets to the San Francisco POE 2013 being held February 21 - 24, 2013 at Ft. Mason, San Francisco. Multiple day discount tickets are available along with tickets for the Friday Evening Gala and Auction. Single Day tickets are also available and make an ideal gift to let your friends know that you care about them. www.orchidsanfrancisco.org

Member's Corner

San Francisco Orchid Society Conservation Committee

DONATE YOUR EXTRA PLANTS AND SUPPORT ORCHID CONSERVATION

The San Francisco Orchid Society Conservation Committee needs your help! We have started a fund-raising campaign to generate funds to support the conservation of orchids and their habitats. This year at the POE the conservation committee will be selling plants in the Member Sales area, and 100% of the proceeds of plants donated to the conservation committee will go to this worthy cause. A wonderful opportunity to generate some extra space in your greenhouse or growing area, and its tax deductible as well!

How will this work? Very simply. Just fill out the plant sales spread sheet with a three letter code (e.g. your initials) followed by a number for each plant, and include the name of the plant. Then just affix a label to the pot with the same three letter code, number and name of the plant. No need to price the plants. At the top of the sales spreadsheet page, be sure to write "Plants donated to the conservation committee", and be sure to have your contact information on the sheet so we can send you the tax receipt. You can bring your donated plants to the POE on Wednesday, Thursday or Friday morning, and give them to member sales. You may also contact one of the conservation committee members (below) before the show if you would like to drop plants off with one of them or possibly arrange for pickup. If you would like to help by working in member sales to sell the plants, you would be welcome, but it is not required. The conservation committee members will price your plant, add our special conservation committee lilac plant tag, and that is all there is to it.

The conservation committee is open to anyone who is interested. If you would like to participate, please contact one of the committee members.

Conservation Committee Members

Steve Beckendorf beckendo@berkeley.edu

Carl Carter carl.m.carter@sbcglobal.net

Mary Gerritsen meg570@comcast.net

Cynthia Hill hill-cynthia@comcast.net

George McRae elegans@aol.com

Mark Sullivan Painterart@comcast.net

San Francisco Orchid Society Display at the POE

This year the theme is "*East Meets West*", a theme with lots of great possibilities for a wonderful society display. Are you interested in helping out with design and assembly of the society display at the POE? Last year we had a bench-type display, but this year we are going back to the themed display. Casper Curto has volunteered to chair this committee, and would appreciate some additional help. If you are interested in this creative activity, please contact Casper. His email is: caspercurt@comcast.net

SFOS Monthly Show and Tell Table

We want to thank our members who bring in their plants for display at the monthly meetings. This is a great viewing experience for all and a great way to learn about new plants we might want to try to grow in the future for ourselves.

But did you know that you can bring in a blooming plant that you might not be certain about the name or type and have our group of experts help identify your plant? The more you know, the better your chance of success. Thank you for participating and we'll see you and your plants at the next monthly meeting.

The Board

* * * *

Docents and Jungle Guides are needed at the San Francisco Conservatory of Flowers

The Conservatory of Flowers is excited to welcome a new class of Docents and Children's Jungle Guides. The training will be held this January and February. I hope you will share the information with your members in your next newsletter or at your next meeting. Thank you for your support!

Docents and Jungle Guides are needed at the San Francisco Conservatory of Flowers. Share your love of botany and plants with Conservatory visitors. No experience needed. Jungle Guide tours are offered at no cost to schools, and cover the basics of plant evolution and tropical ecosystems. Docents lead tours for adult visitors on the Conservatory's extensive collection of tropical plants. The 7-session training program will be held at the Conservatory every Wednesday from January 9 through February 20 from 1:00 - 4:00 p.m. For more information, visit www.conservatoryofflowers.org/support/volunteer or contact Erika Frank, Director of Volunteer Services at 415-637-4326 or efrank@sfcof.org.

Sincerely,

Erika Frank
Director of Volunteers & Education
San Francisco Conservatory of Flowers
415-637-4326
www.conservatoryofflowers.org

[back to top](#)

Announcements

Preparing Your Orchids for Display at POE 2013

COME ONE, COME ALL! Everyone is invited to bring your plants in for display at the spring show! It's fun to share your blooming beauties with others, to get to know your fellow society members, and it's exciting to see visitors learn about growing orchids by seeing your plants. Here are suggestions for getting your plants in show-ready condition.

For best results, start well before the show date.

One to two months before the show:

Identify likely candidates for display - plants that are beginning to spike, those that bloom regularly in February, ones that can be transported in your car. Begin to stake inflorescences as they get to 6-8 inches tall, preferably using bamboo stakes and twist-

ties, so they present themselves at their best. (It's better to begin staking early than too late.) Use a long enough stake to support what is expected to develop. Inflorescences can be trained to be upright or arching. Flower buds will adjust their position towards light, so keep the plant orientation stable once the spike begins to develop. (I do this by keeping the tag at the back of the pot.) Paphiopedilums should be staked so the flower hangs normally, not facing the sky.

Make sure ventilation is good to avoid botrytis fungus spotting. Botrytis is likely when nights are cool and humidity is high, without good air movement, and can cause last-minute problems.

One week before the show

Clean up dead leaves, dried backbulbs, bracts, old spikes and blooms. Gently clean leaves with 50:50 water and milk or lemon juice (top only) and a cotton ball or clean damp soft cloth (do not use on glaucous-leaved plants). Do not use leaf shine products! Trim dead leaf tips at an angle to appear natural, using sterile razor or scissors. Examine the foliage, especially the undersurface, and sheaths, for signs of scale and other pests.

Be careful - Inflorescences are soft when immature but as they elongate, can become brittle and inflexible. Keep water off the buds and flowers to minimize damage.

Attach more twist ties to stake if needed, but keep it unobtrusive. Trim a tall stake to flower level to avoid poking out an eyeball. You can use cotton balls to butt space between developing buds, if needed - just remove them before watering.

A few days before the POE setup

Select the 'finalists' that will be at their blooming prime for the show. Keep protecting emerging buds from bruising, water damage, botrytis. Begin to think about how best to transport the plants. Planning is critical to success. Suitable boxes, packing, helping hands and a vehicle are all part of successful transport. When selecting plants will be in flower at show time, consider how they can be packed and how those containers can fit in your vehicle.

Day of show setup and Transport:

Soak the plant well and apply some fresh mix/bark topdressing. Consider adding some spanish moss to keep delicate roots covered. Clean the pot or use a decorative slip pot or cachepot to hide the plastic pot. Make sure plant is correctly labeled, legibly, with all names fully written out. Put YOUR NAME tag, phone number, on tape or address label on bottom of pot and on an extra label inside the pot. Make sure you have no hitchhikers! Leave infested plants at home. Hosing off aphids as a quick fix inevitably leaves a few hitchhikers that may spread to other plants at a show.

Check that your inflorescences are staked and tied to display their blooms to best advantage. Try to use stakes of the uniform diameter and color (preferably an inconspicuous green); ties should match each other and be as inconspicuous as possible.

Before loading your plants in the car, pack the inflorescences with soft tissue paper or florist's wrapping paper to minimize chafing by leaves etc. Use temporary stakes to support arching or pendulous spikes and wedge the pots into styrofoam boxes to ensure plant and spike are stable during trip to the show; this should prevent them falling over if you need to stop suddenly. You may want to double pot plants for extra stability in a moving vehicle. (Set plant pot inside a larger (empty) pot or bucket.

While in transit, watch out for sunburn or freezing. Park in the shade if plants are left in the car. Use a picnic cooler to transport tiny pleurothallids in cool, humid comfort.

Unpack carefully, checking that any stakes are still secure. Groom again if needed, and remove any travelling supports. If the plant is normally hung or suspended in your growing area it is your responsibility to ensure that the plant is appropriately staged. Some members have created a variety of stands for their plants: all you need is something that will display the plant to its best advantage. This is particularly important for plants with trailing or hanging flowers.

Enter plants in show - go to the registration desk, ask for help if you have questions, to make sure your plants are entered in the correct class. Remember, the more flower plants at the show, the better the show. So bring your plants or send them with someone else!! BE PART OF THE PARTY!! If you have questions about preparing your plants for the big spring event, contact me at hill-cynthia@comcast.net.

See you at the show,

Cindy Hill

POE Ribbon Judging Chair

The Imperiale Youth Prize for 2013 - Pacific Orchid Exposition 2013

The San Francisco Orchid Society is proud to announce that once again we are going to be offering the Imperiale Youth Prize at the Pacific Orchid Exposition. This award, first given in 2010 recognizes excellence in culture for skilled growing and presentation. It is unique and valuable because it is awarded to the "Best Orchid Plant Grown by a Youth, age 17 and under." It is hoped that the award will also encourage a love of orchids in young people as well as an interest in research and conservation.

Eric Imperiale, who has endowed the award, has been a lover of plants since he was a child, seeing the pleasure horticulture gave both his parents and grandparents. He was introduced to orchids after his father Paul began to collect them, and his father's interest became a hobby and labor of love for the whole family. As a youth himself he entered plants in our show, and was the recipient of the old youth award we gave in years past. This love became his academic study, and eventually his career. Presently Eric is a nursery specialist at the San Francisco Conservatory of Flowers where his skills are put to great use maintaining both displays and the important collections.

He decided to endow this award in recognition of the pleasure he got from showing as well as growing his plants, and the pride one gets from recognition of a good job. Our hobby and our society exist and continue because young people choose to pursue the cultivation of orchids and so it serves us, as well as them, to have this award again. The gratitude of the San Francisco Orchid Society to Eric for this trophy is huge and we hope that publicizing it gets more young people to enter plants, and to take up the hobby.

The medal itself is an artistic interpretation of a Dracula orchid rendered in sterling silver.

It was designed and fabricated specifically and exclusively for the prize by Eric M. Imperiale.

For a bio of Eric in his own words, read on below. I had intended to excerpt it, but enjoyed his writing so much decided to publish it with minimal editing.

Dennis Westler

Chair - Pacific Orchid Exposition



*The Eric M. Imperiale
Youth Prize Award*

Eric M. Imperiale

Since I was a child, I have had a fascination with plants, seeing Grandparents and parents on both sides grow plants that were ornamental or edible. The first plants I grew were vegetables. Later grew cacti and succulents, carnivorous plants, bromeliads, and orchids caught my interest.

My journey into the world of orchids came shortly after my father's introduction to the marvelous plants. Awe for their beauty quickly became a family hobby and obsession. One plant led to another. Love for a plant turned into passion for a genus. A world of variety, oddities, scent, and color opened up to us and we were enraptured. Weekends were filled with travels to garden centers, orchid shows, orchid growers' greenhouses, orchid society sales, and botanical gardens.

We learned about the SFOS and quickly joined. Meetings were a wild mix of trolling the

plant opportunity table and devouring of speakers' talks. Members of the SFOS shared their knowledge and told us about plants that were a must. The SFOS show was an annual pilgrimage where displays amazed and the vendors and society plant divisions flooded our senses and drained our budgets. The few dozen plants we started with grew in number. Soon a small greenhouse was being built in our back yard.

By the age of twelve my skills expanded from assistant to grower. Despite some stigma and a lack of understanding from my peers, my teenage years were infused with orchids. In the tumultuous formative teen years, orchids helped provide stability and respite from the confusing quest for place in an ever-changing body and mind.

I began entering orchids at the SFOS shows and won ribbons in several open classes as well as winning the youth award twice. Although I continued to grow orchids, I stopped entering orchids in the show and focused on volunteering for the show - even taking days off school to help.

I began working in the orchid industry at the age of fifteen when I entered City College of San Francisco (CCSF) to study horticulture. I started as a grower for an orchid boarding company and over the years gained experience in commercial orchid crops and interior maintenance in commercial and residential settings. I also broadened my skills by working in landscaping.

While at CCSF I applied for and won a scholarship/internship from the SFOS. This gave me the opportunity to care for the CCSF orchid collection and intern at the Conservatory of Flowers (COF). Shortly thereafter I went to Cal Poly, SLO where I also cared for the orchid collection and joined the orchid society. When I came home I returned to the orchid business where I worked for several more years.

Upon graduation from college I tried several other enjoyable and rewarding professions but ultimately found myself drawn to plants. I worked for the City of San Francisco as a gardener and eventually had the opportunity to work at the COF. At the COF I am able to share the wonders of plants and orchids with the young and old from all parts of the world, while furthering the mission of research, conservation, and education.

As the SFOS Orchid Show grew into the Pacific Orchid Exposition, the youth prize quietly disappeared. As an adult I looked back in time with sweet sentimentality and found myself wanting to share with others the learning, community, and opportunities that orchids, the SFOS, and its members shared with me. The future of orchids and this world rests in the hands of the next generation. The passions, gifts, and potential of youth must be fostered in order to preserve and advance the accomplishments of prior generations. The Imperiale Youth Prize is one small contribution ensuring the inter-species success of plant and person.

* * * *

Calling all Ribbon Judge Volunteers for POE!

We are looking for members to participate in ribbon and trophy judging at the upcoming Pacific Orchid Exposition. Judging takes place on Thursday, February 21. Volunteers need to be available from around 11 am through 4 pm (lunch is provided). Familiarity with orchid genera, the categories for judging at POE, and a cooperative, friendly outlook are very helpful. Signup sheets will be posted at the SFOS meetings in January and February.

To learn more, or to volunteer, contact Cindy Hill, coelogyne7@gmail.com, (510) 524-1854, by February 10.

* * * *

Pacific Orchid Exposition Seminar Schedule -Mark your calendars now!

Friday

- 11:00 am Dennis Olivas D and D Flowers
"Companion orchids to grow with Cymbidiums"
- 12:30 pm Sergio Garcia " Olompali Orchids, Novato
"Laelia and Cattleya orchids"
- 2 pm Mary Gerritsen, San Francisco Orchid Society
"Masdevallias-selected species and tips for growing them"
- 3:30 pm Chris Mende, San Francisco Orchid Society,
"Making Paphiopedilum Happy"

Saturday

- 10 am. Michael Ooi, Ooi Leng Sun Orchids, Penang Malaysia
"The orchid experience of Malaysia"
- 11:15 am. Roy Tokunaga, H&R Nursery, Hawaii
"Laturia Dendrobiums"
- 12:30 pm Peter Tobias, Orchid Conservation Alliance, Encinitas, CA
"Orchid conservation efforts in South America"
- 2 pm Holger Perner, Huang Duan Mountains Biotechnology, Chengdu, China
"Paphiopedilum: their cultivation and propagation"
- 3:30 pm Paul Isley
"Why Tillandsias are the ultimate horticultural companion for orchids"

Sunday

- 9:30 am Angelic Nguyen, Orchid Design
"Fragrant orchids"
- 11:00 am Jeff Harris, San Francisco Orchid Society
"Orchid photography"
- 12:30 pm Matt Wei-Yi Chen, Ten Shin Gardens, Taiwan
"Chinese Cymbidiums"
- 2 pm Dan Arcos, San Francisco Bromeliad Society
"Growing bromeliads outdoors in the Bay area"
- 3:30 pm Janet Lamborn, Agdia
"Orchid virus detection: with Agdia's help you can do it!"

* * * *

POE 2013 - East Meets West is Almost Here

With February 21st barely 8 weeks away, the efforts to mount The Pacific Orchid Exposition 2013 are reaching their height. There will be exciting changes to the show as well as the expected beauty and excitement of the best Orchid Show in the country.

New Weekend Seminar Schedule

Mary Gerritsen has organized a wonderful compliment of lectures that will run through all three days of the show, covering a broad range of topics. There is something for all levels of involvement in the hobby, and I suspect many of you will want to attend several through the weekend. The speakers are members of our society, vendors, and luminaries in the orchid world from all over. This has been quite a task and we owe her thanks for doing this. It is the hope of the board that this will be an ongoing and popular feature of the show in future years. We are offering new ticket options for those who want to hear lectures on several of the days (of course, volunteers are free to attend all three days). The Schedule of the lectures is up now on the Pacific Orchid Exposition page of our website (<http://www.orchidsanfrancisco.org/poe.html>), as well as our Facebook pages. So you can plan your volunteer time around lectures you would like to see.

Society Display

We are returning to the kind of Society Display that we had a number of years ago, under the direction of Casper Curto who has designed and executed winning displays for the Orchid Society of California, and who directed our old fashioned bench display last year in recognition of our 60th anniversary. This will not be as part of the front entrance display, as was the case in 2011 and for several previous years, but a freestanding display in the show area. He has great plans to address the theme using spectacular props, but will need both help and plants. I urge folks with time on Tuesday Feb 19th, Wednesday Feb 20th, and the morning of Feb 21st to contact him and offer their help in creating what promises to be a fabulous display (and will be in competition for the appropriate trophies).

Of course, to have a truly great display we will need orchids as well as props. Now is a great time to look at your collection and see what you have that might be in bloom. For those that have not entered before, we have put a document on the website that explains the process, and also links to the schedule of the show. Where, when, and how are all covered. You will find this at <http://www.orchidsanfrancisco.org/enter.html>

More Vendors!

After years of economic doldrums, we are getting back to a point where more and more vendors are eager to participate on our show. We will have more vendors, and specifically more international vendors than we have had in several years. The list of all those who are in so far is up on our website (www.orchidsanfrancisco.org - it is a great resource; more members need to be visiting it!), and most are linked to their websites for those who want to make pre-orders). International vendors add to the prestige of our show as well as allowing us to get hold of plants we might otherwise not see. Check out their websites, and say hi to them when you are at the P.O.E!

Silent/Live auction

We will once again be having a live auction at our Gala. This was a huge fundraiser for us as well as a very exciting part of the evening. There were three great prizes auctioned, and it looks like we will have similar offerings again. The Silent Auction, Chaired by Lynne Murrell, will go through the weekend, though some items will be Gala only. She helped procure some amazing things last year: wines, orchids, other plants of note, tours and events; and it is looking like there will be some wonderful items to bid on this year as

well. If you have, or know of donations that would add to the auction by all means get in touch with Lynne, whose number is on the chair's list below.

Of course, we need your help to get our show running, and insure that those who attend have the best time possible. Some of us have been working throughout the year on this, but most of us, or ideally all of us need to devote some time to making sure this stays the best orchid show in the United States, and one of the best in the world. The list of chairs is printed below, and I urge you all to go through it and speak to one of more of the people listed. There are many tasks, most fun and easy and a great way to feel more involved in your society. It takes hundreds of person-hours to keep this show functioning, more actually than we as a group could provide. But it behooves us to take on the bulk of the volunteer efforts as we are the beneficiaries in terms of speakers, plant tables, rent of the meeting room, and all the other things that our group needs to keep us going. It also enables us to support several charities that improve our hobby as well as the community at large.

Hospitality Chair Needed

Unfortunately, Bob Christensen who chaired the Hospitality Committee for several years will be unable to do it this year. I am looking for someone who is interested in taking over for this year. This is a small but key committee that operates in the sales area dealing with some of the vendor and volunteer needs. Distribution of wineglasses to vendors at the gala, as well as dinner tickets for their gala evening dinner, distribution of the dots that are used to mark sold plants and other items, seeing that the vendors are covered if they need to eat or visit the facilities (important for small vendors who are there by themselves!), and distributing volunteer lunches are the functions of this committee. Bob will be glad to share his volunteer list from the past, as well as his expertise prior, he will just be unable to attend.

If this is of interest to anybody I urge you to contact me at your earliest convenience. I hope all of you had a wonderful holiday season. It is now time to look ahead to this wonderful event and join in the effort of sharing our enthusiasm, knowledge and the beauty of orchids with greater Bay Area! We need all of us to volunteer and encourage all your friends and family to attend (or volunteer as well). The rewards of our efforts will be great if we do.

Thank you!

Dennis Westler

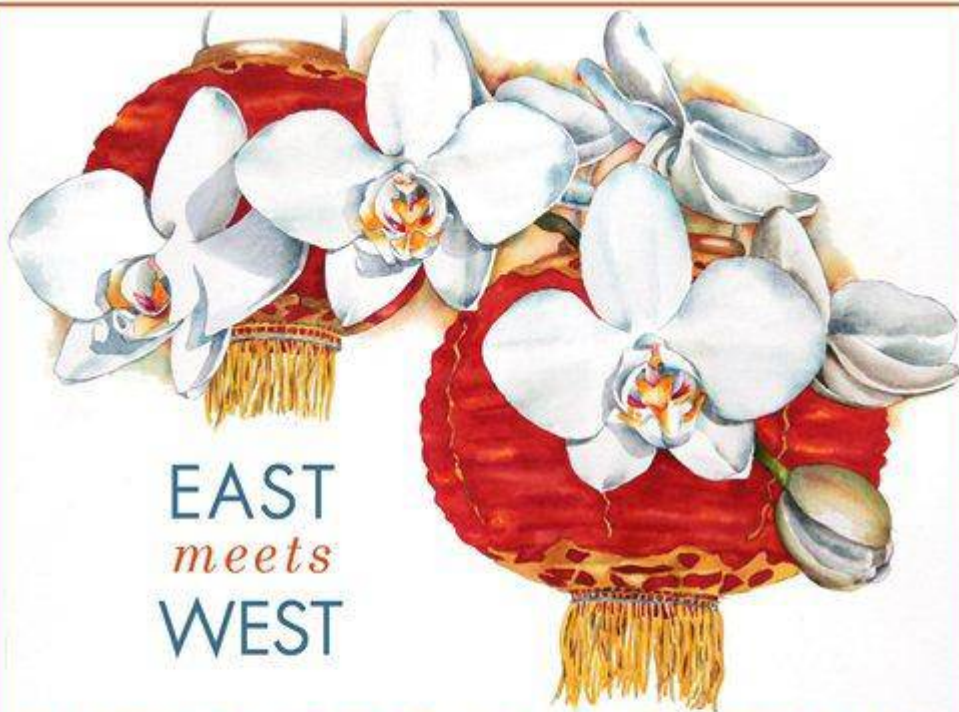
Committee Chairs Pacific orchid Exposition 2013

Accounting- Dan Peter (650) 563-9259 dan.peter@sbcglobal.net
AOS Judging- C. Todd Kennedy (415) 664-8851
Book Sales- Maria Chow (510) 317-2032;
maria218@pacbell.net
CSA Judging- To be announced
Corsages- To be announced

Credentials- Jonathan Chang; jteacher@juno.com
Jonathan is currently in need of a co-chair
Front Entrance Display-Tom Perlite
(415)990-1314; tperlite@sbcglobal.net
Hospitality- To be announced
Membership- Claire Zvanski claireandbear@comcast.net,
Florence Inserto floinsert@yahoo.com
Orchid Doctor/Docent Tours
Dennis Westler (415)336-2752;
denniswestler@aol.com
Plant Division- Bill Theiss,
(530) 695-3159;
jokesift@syix.com ,
Gay Matthes (415) 346-9903
Plant Entry- Jean Lee (415)665-6079;
jeanleeorchids@gmail.com
Maureen Clarke (415) 333-4033;
maureenclarke@sbcglobal.net
Gerardus Staal, 13
penhybstaal@comcast.net
Plant HotelAllison Lehman (510)233-5258:
Allison@webbnet.com George McRae elegans@aol.com
Plant Sales- Carol Zoltowski, (415) 657-3222;
czoltowski@sbcglobal.net
Preview Night- Frances Larose, (650)548-6700;
flarose@prmagic.com
Production- Ken Giebel, Mark Felton
Promotion- Frances Larose, Liz Stigge
Property Manager- Ellen Edelson
(415) 731-5924 e.edelson@sbcglobal.net
Ribbon Judging\Trophies & Awards
Cindy Hill (510)-524-1854
hill-cynthia@comcast.net,
Glenn Finch Glennfinch@aol.com
SFOS Society Display- Casper Curto caspercurt@comcast.net
Security- Stanford Stapleton, (415)384-0427; stanford@rkmediasolutions.com
Silent Auction- Lynne Murrell lmurrell@matson.com
Ticket Sales- Mark Sullivan painterart@comcast.net
Sponsorship - Frances Larose
T-shirt & Poster Sales- Alicia Stiles
orchidpleuro@earthlink.net
On-line Ticket Sales- Frances Larose,
Vendor Evaluation- Dennis Westler (see above)

[back to top](#)

Special Events



EAST
meets
WEST

PACIFIC ORCHID EXPOSITION
FEBRUARY 21 - 24, 2013
www.orchidsanfrancisco.org

A California Non-Profit Tax Exempt 501(c)3 Corporation

Image by Sally Robertson

Gold Coast Cymbidium Growers
Cymbidium Orchid Auction

Friday, January 18, 2013

Auction 7:00 PM
Registration & Preview 6:30-7:00 PM

San Mateo Garden Center
605 Parkside Way
San Mateo, CA 94403

Beautiful Cymbidiums and their
Companions, Including In Spike, Rarely
Available, and Show & Award Winners!

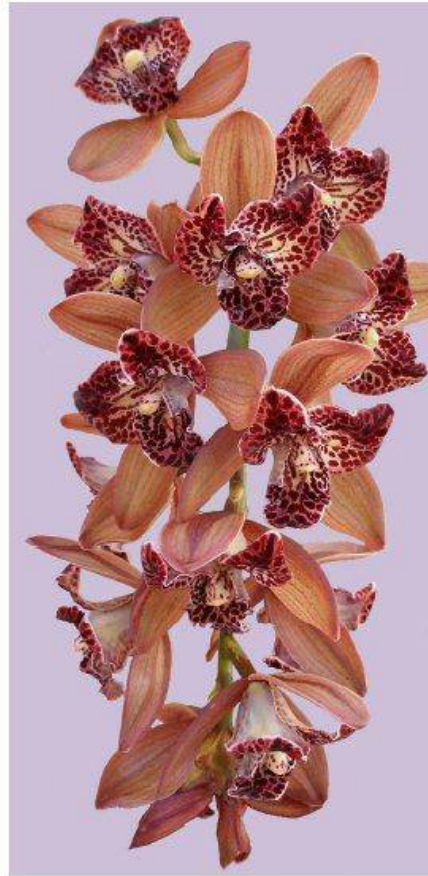
- 200 Plant Entries
- No Buyers Premium
- Absentee Bids Accepted



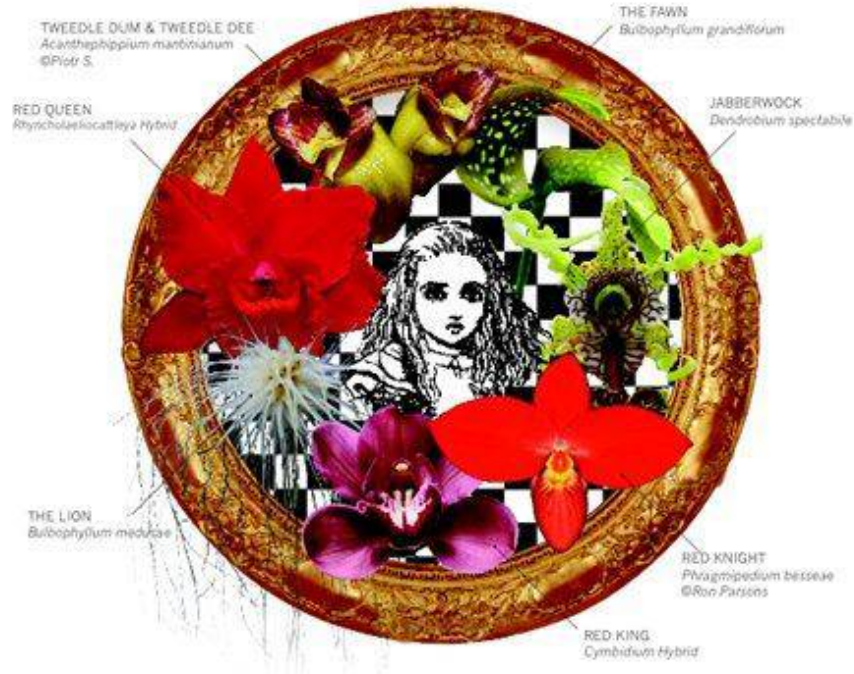
Cym. Hot Devon 'Bird of Paradise' AD/CSA
Photo by Darrel Wong

Catalog & Photos will be Available after January 7,
2013 at: www.GoldCoastCymbidiumGrowers.com

Email Questions or Inquiries to
bacyms@yahoo.com or call (510) 582-5896



56th Peninsula Orchid Society Show & Sale



“Through the Looking Glass”

JANUARY 26-27, 2013 · 10 AM to 5 PM

- ↪ Spectacular Orchid Displays
- ↪ Speakers and Workshops
- ↪ Orchid Sales and Giveaways

COMMUNITY ACTIVITIES BUILDING
1400 ROOSEVELDT AVE
REDWOOD CITY, CA

GENERAL ADMISSION - \$5
SENIORS / STUDENTS - \$3
CHILDREN 12 AND UNDER W/ ADULT - FREE



<http://penorchidsoc.org>



[back to top](#)

[Change of address?](#)

Send all address and e-mail changes to:
Florence Inserto - floinsert@yahoo.com

or Claire Zvanski: (415) 341-3085 - cvanski@hotmail.com

SFOS Membership
P.O. Box 27145,
San Francisco, CA 94127

Newsletter Submissions

The SFOS Newsletter welcomes news, articles, events, and any other items of interest to members. Send items by the 15th of the month in an email to Stanford Stapleton at: stanford@rkmediasolutions.com

Please include your name at the beginning or end of your text. All submissions will be reviewed and may be edited due to space limitations. Thank you!

Sincerely,

San Francisco Orchid Society

Like us on Facebook 

[back to top](#)

[Forward email](#)



Try it FREE today.

This email was sent to stanford@rkmediasolutions.com by sfosnewsletter@orchidsanfrancisco.org | [Update Profile/Email Address](#) | Instant removal with [SafeUnsubscribe™](#) | [Privacy Policy](#)
San Francisco Orchid Society | PO Box 1234 | San Francisco | CA | 94999